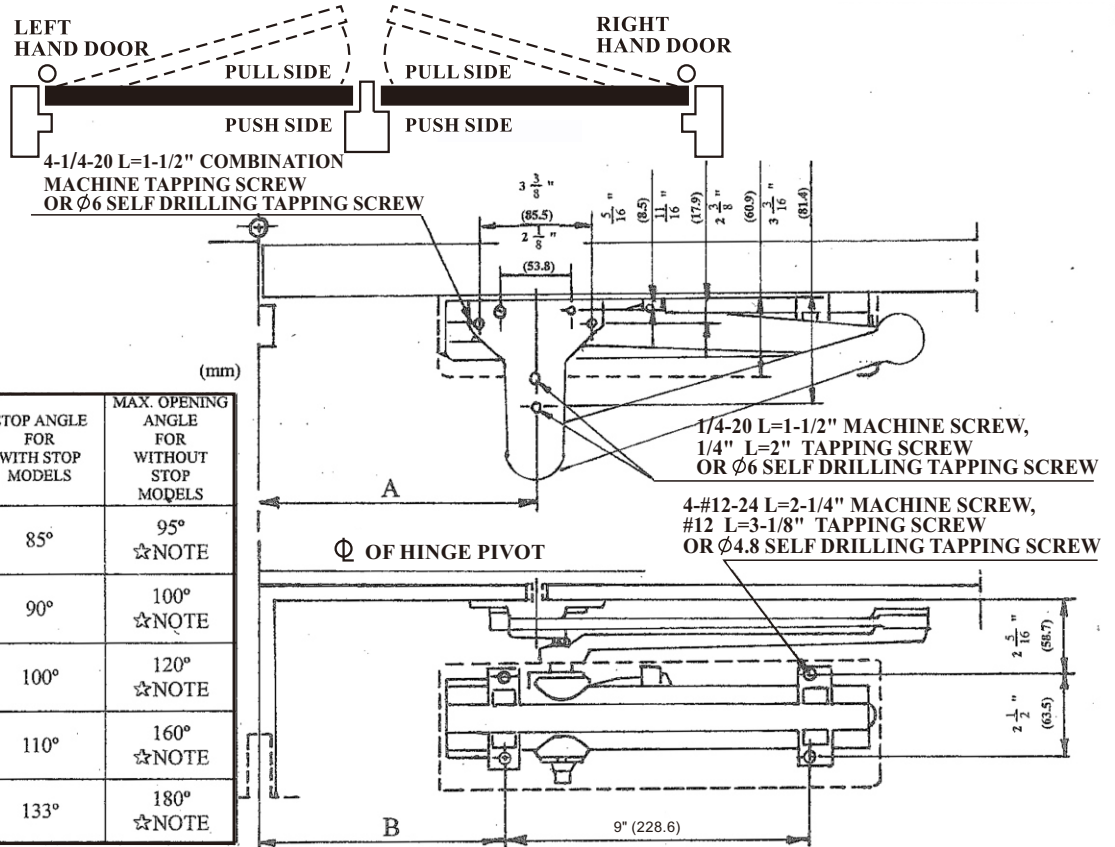


**INSTALLATION INSTRUCTIONS**

**HEAVY DUTY PARALLEL ARM APPLICATION ( FOR D-4550, D-4551)**

**CLOSER MOUNTED ON PUSH SIDE OF DOOR**

**LEFT HAND DOOR ILLUSTRATED. SAME DIMENSIONS ARE APPLIED FOR RIGHT HAND DOOR-MEASURED FROM HINGE  $\Phi$**

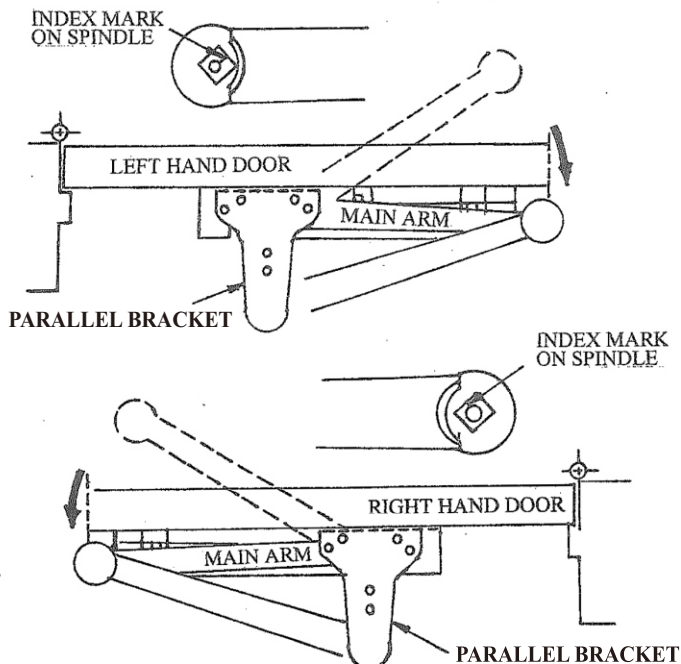


DIMENSION		HOLD-OPEN ANGLE FOR HOLD-OPEN MODELS	STOP ANGLE FOR WITH STOP MODELS	MAX. OPENING ANGLE FOR WITHOUT STOP MODELS
A	B			
11 1/8" (283)	10 1/4" (260)	85°	85°	95° ☆NOTE
10 1/2" (267)	9 5/8" (244)	90°	90°	100° ☆NOTE
9 3/8" (238)	8 1/2" (216)	100°	100°	120° ☆NOTE
8 1/4" (210)	7 3/8" (187)	110°	110°	160° ☆NOTE
6 5/8" (168)	5 3/4" (146)	133°	133°	180° ☆NOTE

☆NOTE : A SUPPLEMENTAL DOOR STOP IS ALWAYS RECOMMENDED FOR INSTALLATIONS NOT INCORPORATING A STOP IN THE CLOSER ARM. DAMAGE TO THE DOOR, FRAME AND CLOSER MAY OCCUR UNLESS STOP IS USED.

**A** 1. MARK LOCATIONS OF ATTACHING SCREWS ON DOOR AND FRAME AS SHOWN ABOVE.  
2. ATTACH CLOSER TO DOOR AND PARALLEL BRACKET TO FRAME ((SHORT END OF CLOSER TOWARD HINGE))

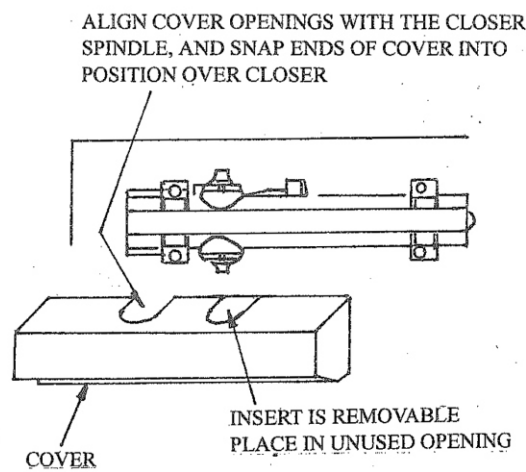
**B** ASSEMBLE MAIN ARM TO CLOSER WITH INDEX MARK ON END OF SPINDLE 45° FROM AXIS OF ARM, AS ILLUSTRATED BELOW, USING A WRENCH ON THE BOTTOM SPINDLE TO ROTATE SPINDLE INTO POSITION. ATTACH ARM TO SPINDLE WITH WASHER AND SCREW.



**C** MOUNT CLOSER ON DOOR AND MOUNT PARALLEL BRACKET TO FRAME STOP AS PER TEMPLATE.

**D** ADJUST AND REGULATE DOOR CLOSER AS DIRECTED ON D-4550 INSTALLATION INSTRUCTIONS FOR SPEED, LATCHING ACTION, BACKCHECK, AND DELAYED ACTION. CAUTION : BACKCHECK IS ESSENTIAL TO PREVENT ARM FROM STRIKING ARM STOP WITH IMPACT.

**E** INSTALL COVER AS FOLLOWS :



FOR HOLD-OPEN ARM : A QUARTER TURN ON THE CONTROL HANDLE WILL ENGAGE OR DISENGAGE THE HOLD-OPEN FUNCTION.